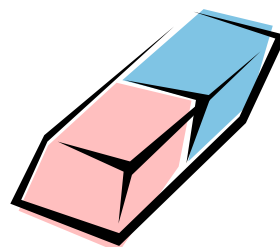
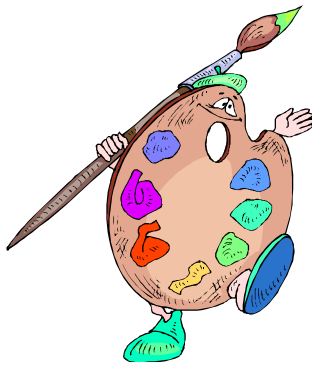
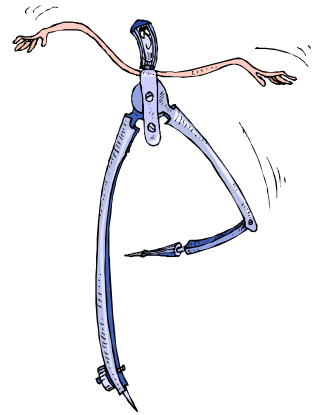
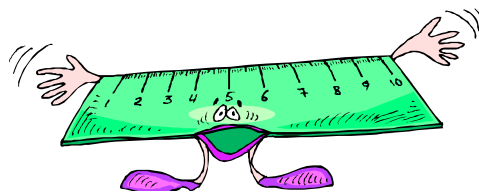
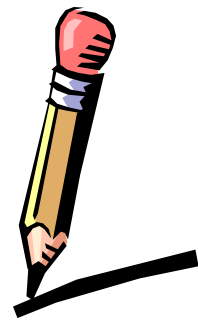
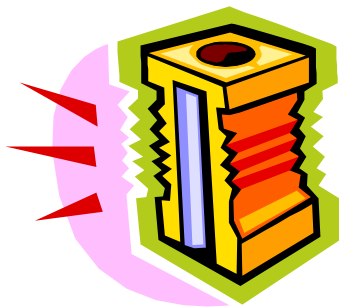
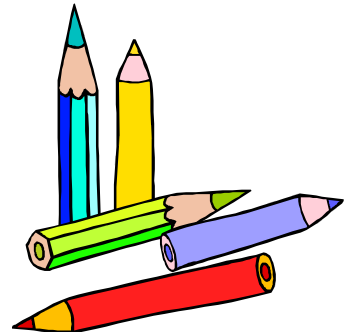
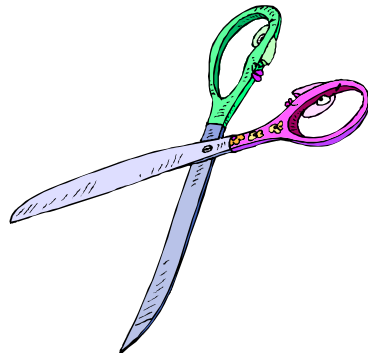
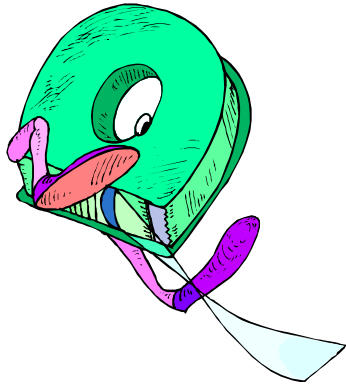
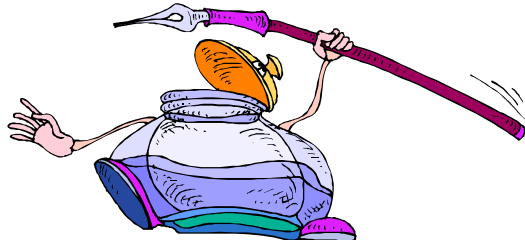


VOCABULAIRE 1

Andrée Otte

Des objets classiques





Des vignettes à coller sous chaque dessin en consultant le modèle de ton enseignant(e).

un compas

une latte

l'encrier

le porte-plume

du papier collant

des ciseaux

un crayon gris

la boîte de peinture

le livre

un bloc-notes

le stylo

une gomme

un feutre

des crayons de couleurs

la palette de couleurs

un taille-crayon

un cartable

des feutres